

For Sale

Ornamental Turning Lathe No. 1520 made in 1834 by Holtzapffel & Co.

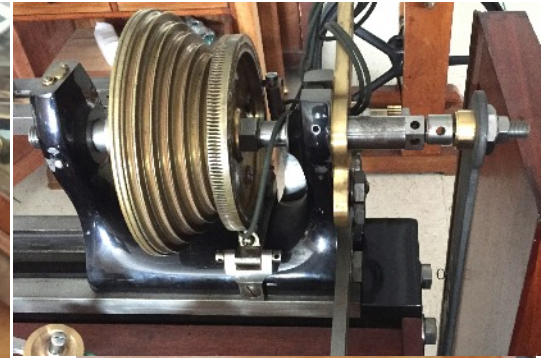
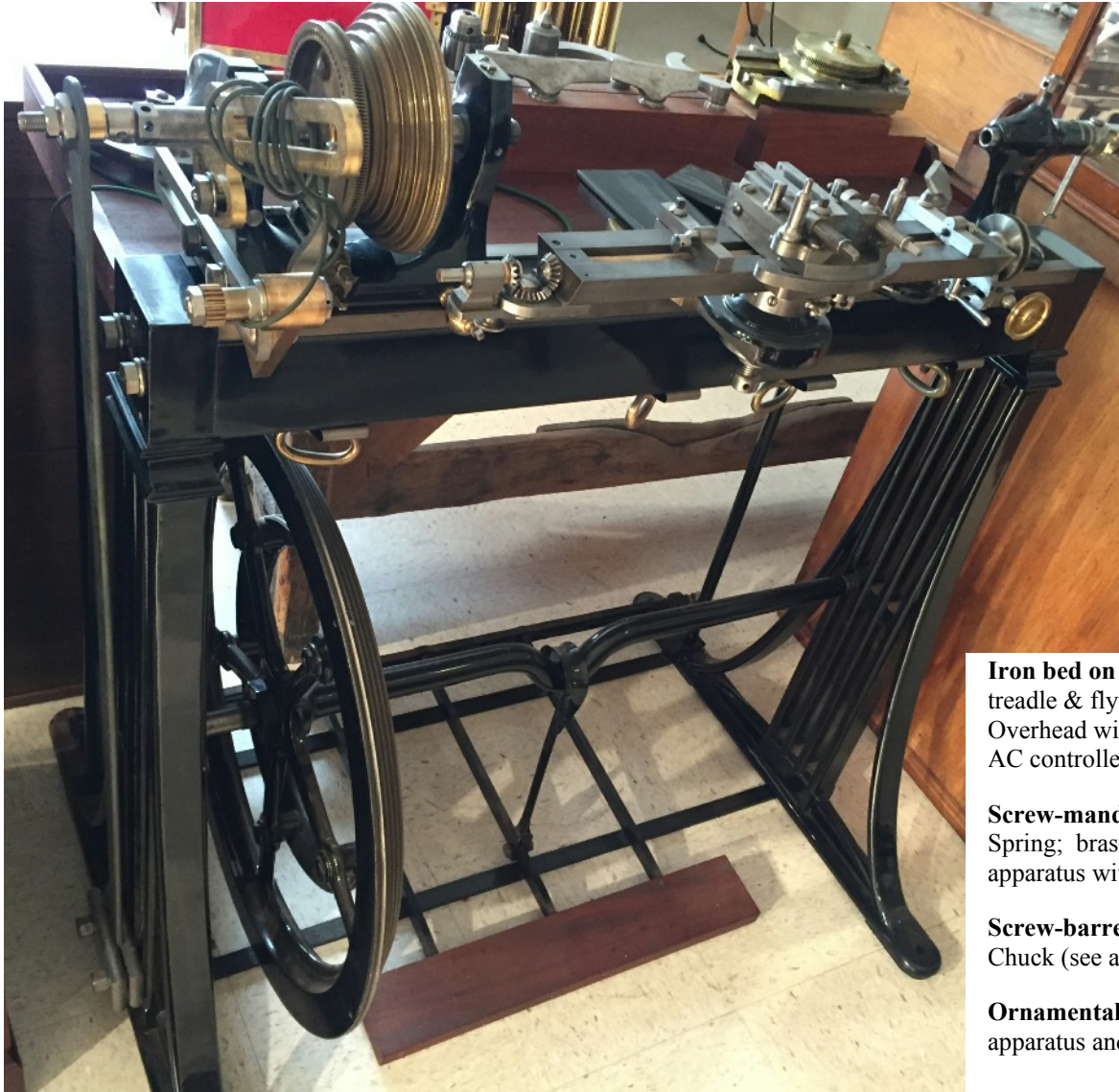
Provenance:

First listed on 25th November 1834 as sold for £15-0.-0 to Holtzapffel & Co., (Believed to have been used in their workshop at 127 Long Acre, London), then completely reconditioned, including new mandrel & collars, and resold 'as new' on 9th May 1864 to Edmund Macrory of 19 Pembridge Square, London W. On 2nd June 1876, he also acquired No.2161 secondhand from H & Co., (fitted with the rare internally geared headstock pulley). Then on 5th June 1896, he returned the lathe to H & Co., for overhaul. 3rd owner was listed as G W Mackenzie . This stage of the history is rather confusing as MacKenzie is also listed as the 3rd owner of No.2161 and both lathes were kept together for many years, passing from MacKenzie to the 4th owner, E G Pierce, about 1950; then to the 5th owner, Michael Pierce, grandson of E G Pierce. In 1974 both lathes were acquired by Paul Bass, then Editor of the Bulletin of the Society of Ornamental Turners. Some time around the year 2000 Paul Bass sold No.1520 to an American gentleman and No.2161 was sold at Christies in 2003; finally the two lathes were separated. No.1520 and its accessories have been restored to 'as new' condition. The current owner resides in Wisconsin, USA.

**Enquiries in the first instance to John Edwards
by email to [ornamental.turning \[at\] talktalk.net](mailto:ornamental.turning@talktalk.net)
(using @ in place of [at]), or by telephone to
0(+44)1732-355-479**



Iron bed on iron frame with mahogany back-board shelf, treadle & flywheel with slow motion ring, ceiling-mounted Overhead with 2 modern variable speed DC motors with 110 volt AC controllers,

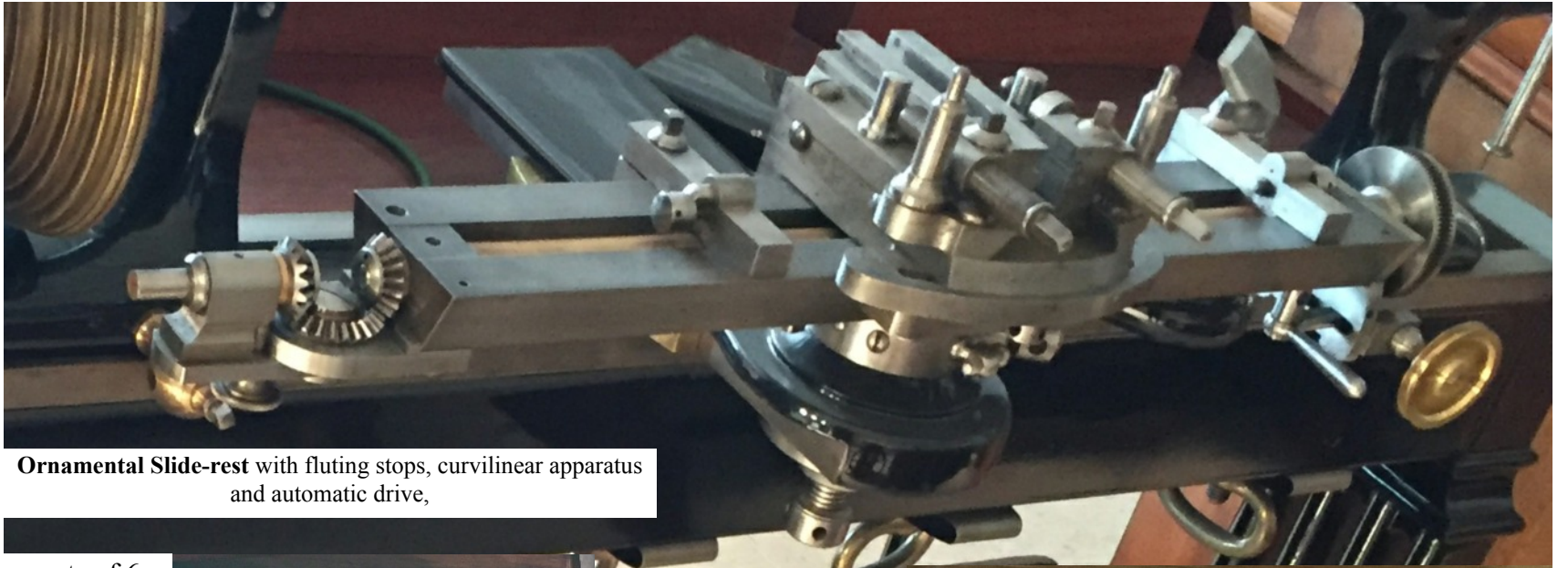


Iron bed on iron frame with mahogany back-board shelf, treadle & flywheel with slow motion ring; ceiling-mounted Overhead with 2 variable speed DC motors with 110 volt AC controllers (not shown),

Screw-mandrel headstock 5" centre height with Pumping Spring; brass pulley with 7 rows of divisions, segment apparatus with worm-wheel and tangent screw,

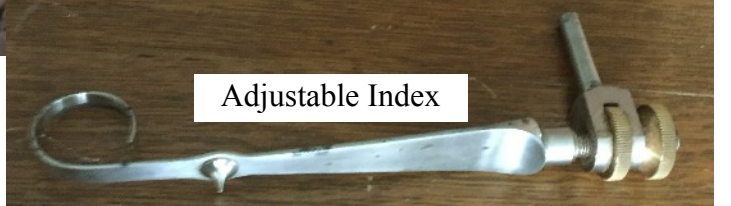
Screw-barrel Tailstock with live centre and Jacobs Drill Chuck (see also page 4),

Ornamental Slide-rest with fluting stops, curvilinear apparatus and automatic drive,



Ornamental Slide-rest with fluting stops, curvilinear apparatus and automatic drive,

sets of 6 Holtzapffel & 6 Whitworth screw guides and star-nuts for thread cutting



Adjustable Index



Ashton's Automatic Counting Index with 4 division plates;



Holtzapffel's Pumping Apparatus with Hand Motion, 6 rosettes and spring;

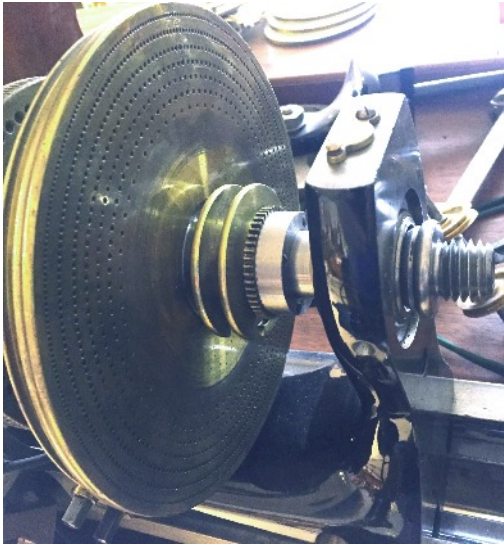


Large Mahogany Tool Cabinet with upper tier of shelves enclosed by glazed doors and lower tier of 12 drawers enclosed by panelled doors fitted with 14 long-handles and 21 of 24 short-handled turning tools the cabinet (see also page 9).



Hand Rest, tees and tailstock centres

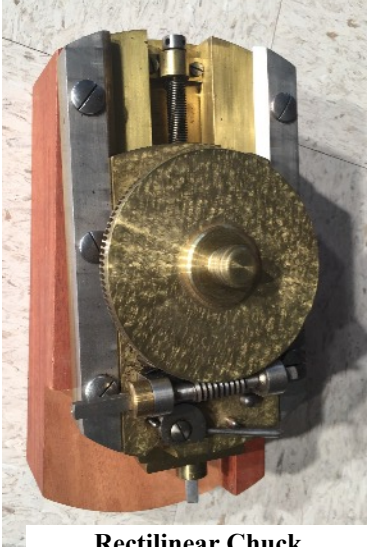




Headstock with fitting for Compensating Index



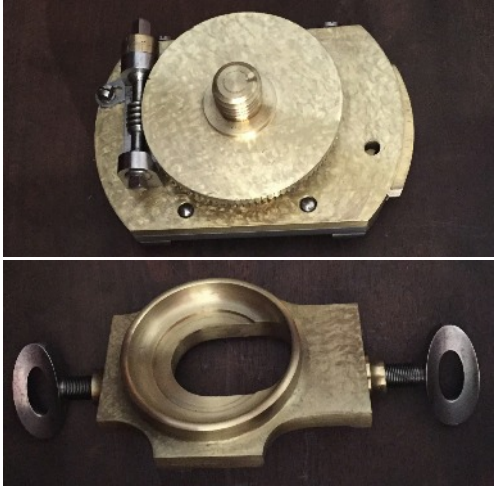
Compensating Index for equal division of the ellipse



Rectilinear Chuck



Eccentric Chuck



Ellipse Chuck with Cam-ring,



Dome Chuck



Dividing Chuck & Spiral Apparatus (rear-mounting) with gears & arbors,



Dividing Chuck



Atkinson's Reciprocator
by Holtzapffel,



Slender Turning Guide



Rogers' Undulator



Eccentric Cutting Frames (2)



Vertical Cutting Frame



Drilling Spindle



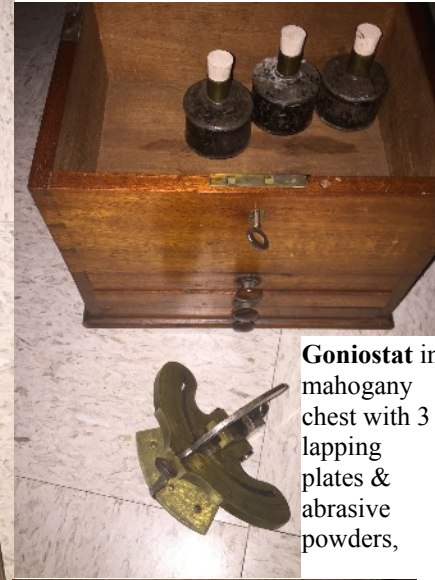
Internal Cutting Frame



**Universal Cutting Frame
(Evans geared type)**



Horizontal Cutting Frame



Slope-top Mahogany Chest with 168 slide-rest cutters, 144 ECF cutters, 36 small UCF cutters, 72 small drills with matching Drill Spindle (on page 7) and a Pad Handle,

Goniostat in mahogany chest with 3 lapping plates & abrasive powders,

Dee-bit & Taps for chuck-making,



3-jaw S.C. chuck with inside & outside jaws (modern),



Bead-tool Sharpening Outfit in mahogany chest,



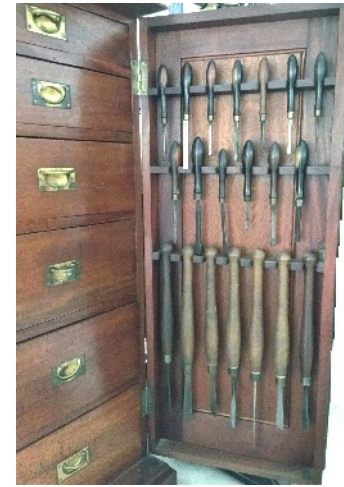
Assorted brass cup and other work chucks,



Large 3-jaw self centring chuck



C spanner and bent bar



Cabinet doors left & right



Overhead Crane



Mahogany Triptych Wall Cabinet containing 72 (of 75) hand-turning chisels in polished rosewood handles,

Enquiries in the first instance to John Edwards by email to [ornamental.turning\[at\]talktalk.net](mailto:ornamental.turning@talktalk.net) (using @ in place of [at]), or by telephone to 0(+44)1732-355-479